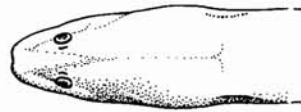


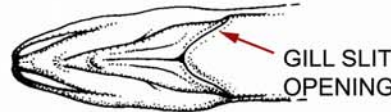
**NONINDIGENOUS SPECIES:**

**Asian Swamp Eel**  
*(*Monopterus species*)*

SNAKE-LIKE BODY  
NO OBVIOUS FINS  
V-SHAPED GILL OPENING  
MAXIMUM SIZE: 1 METER (ABOUT 3 FEET)



TOP OF HEAD



UNDERSIDE OF HEAD

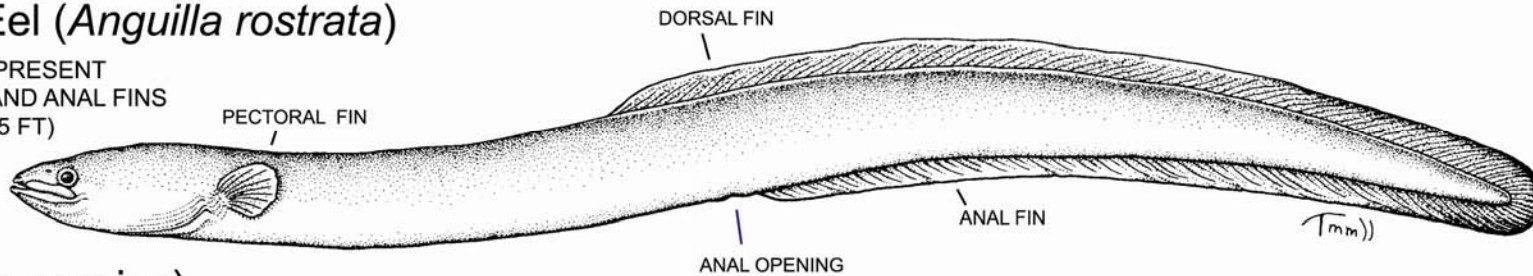


**NATIVE FISH & SALAMANDERS:**

**DO NOT CONFUSE SWAMP EELS WITH NATIVE SPECIES**

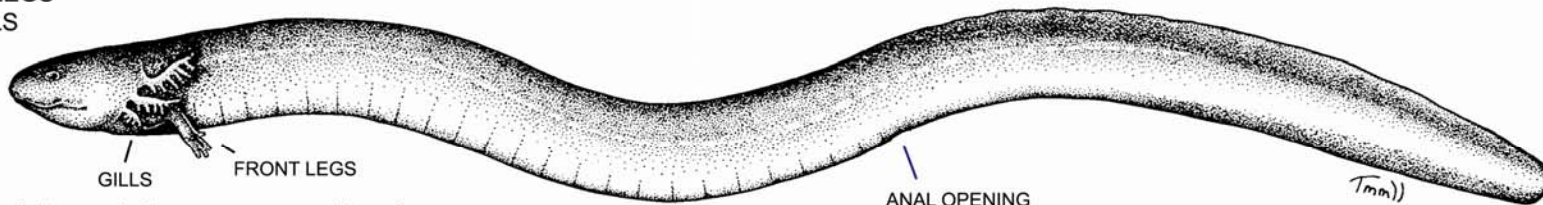
**American Eel (*Anguilla rostrata*)**

PECTORAL FIN PRESENT  
LONG DORSAL AND ANAL FINS  
SIZE TO 1.5 M (~5 FT)



**Siren (*Siren species*)**

SMALL FRONT LEGS  
EXTERNAL GILLS  
SIZE TO 98 CM  
(39 INCHES)



**Amphiuma (*Amphiuma species*)**

TINY FRONT AND HIND LEGS  
SIZE TO 116 CM  
(46 INCHES)

